

Work Content Estimation & Manpower Optimization (Indirect areas)



Client's Challenge

- Work Content Estimation for : Machine cleaning, Housekeeping/Sanitation, Horticulture, Security, R&D
- Manpower Calculation & Work distribution
- Suggestions & improvement for manpower optimization

PMI's Approach

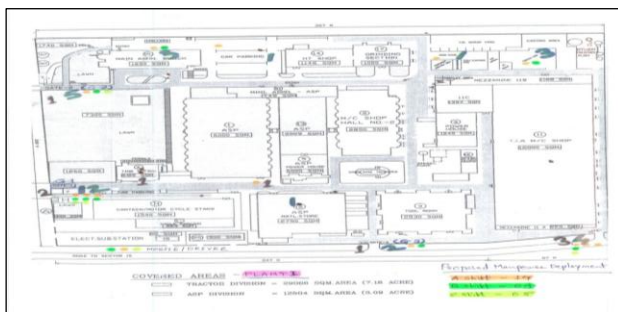
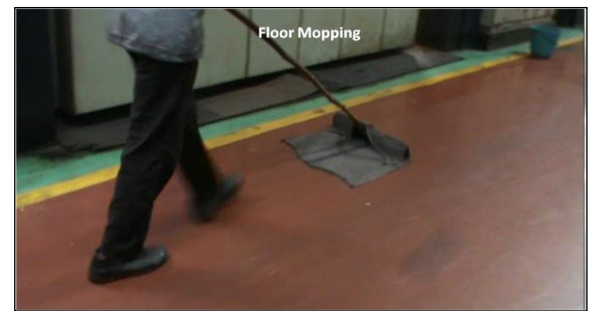
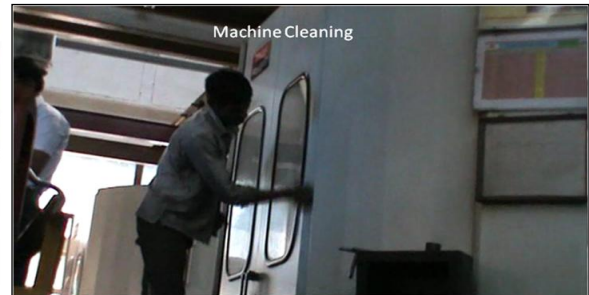
- Prepared formats for data collection at each areas
- Sampling observation & video shooting for each area
- Work content estimation using Video time study, work sampling, etc.
- VA, NVA, SVA Analysis of repetitive/non-repetitive activities
- Master activity sheet generation for each area

Results

- Work content with master activity sheet - helps to calculate manpower if any changes in activity time

Key Points

- Work content measurement of indirect area
- Optimum use of Manpower/Resource



Sr.no.	Area	% Reduction in Manpower	%Productivity Improvement
1	Machine Cleaning activities	15%	20%
2	Sanitation / Housekeeping	25%	30%
3	Horticulture	10%	10%
4	Security	25%	35%
5	Research & Development	10%	12%

*Data shown here has been modified to protect client confidentiality