

Material Movement Study - Blanking & Stamping



Client's Challenge

- Ensure blanking & stamping does not constrain production at body shop
- Optimize MHE requirements
- Analyze impact of crane movement on changeover time & throughput

PMI's Approach

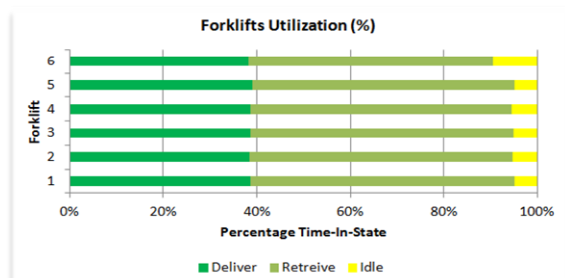
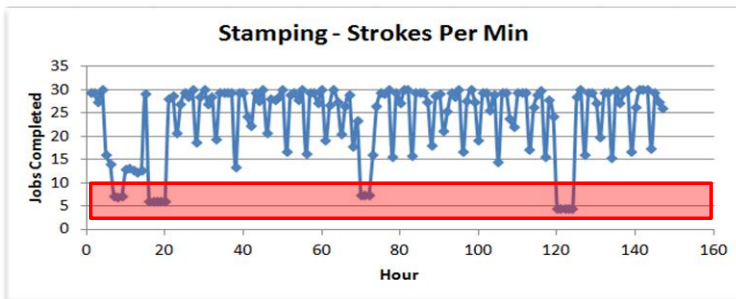
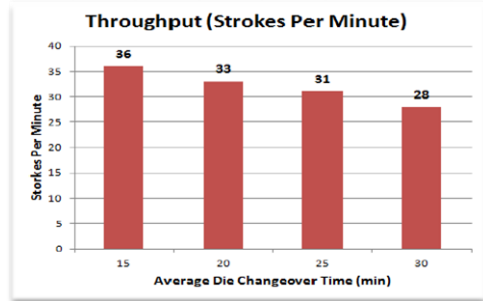
- Analysis of Data and Verification of Baseline Model
- Understand impact of:
 1. Number of forklifts
 2. Die Changeover time at Blanking Line; on throughput
- Capture impact of material movement congestion

Findings & Recommendations

- Drops in production due to congestion of forklifts at Stamping Storage area
- Under-utilized forklifts at end of Blanking line
- Reduced congestion by proposing that forklifts carry 2 pallets/trip
- 30% reduction in MHE requirement by eliminating under-utilized forklifts
- Identified 30 minutes as maximum allowable changeover time at Blanking

Key Points

- Greenfield facility: MHE requirements & congestion analysis



*Data shown here has been modified to protect client confidentiality