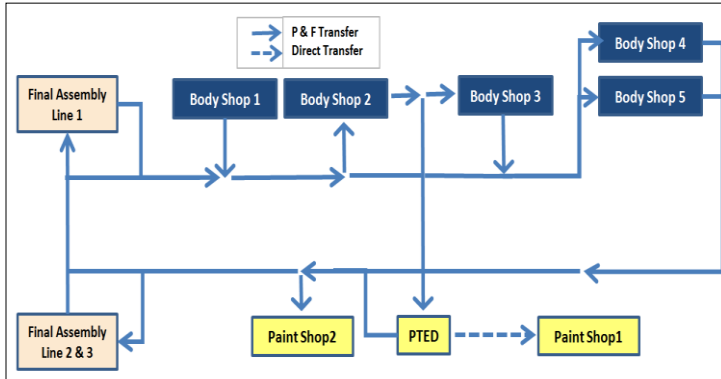


Congestion Analysis: Closed Loop Material Handling System



Key Points

- Closed loop power & free(P&F) system
- This P&F system transports:
 - Empty Hangers
 - BIW
 - CED Bodies
 - Painted Bodies
- Different production levels across five body shops
- Staggered placement of body shops complicates the empty hanger distribution

Client's Challenge

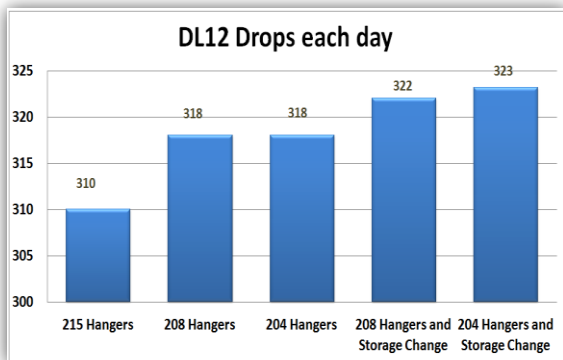
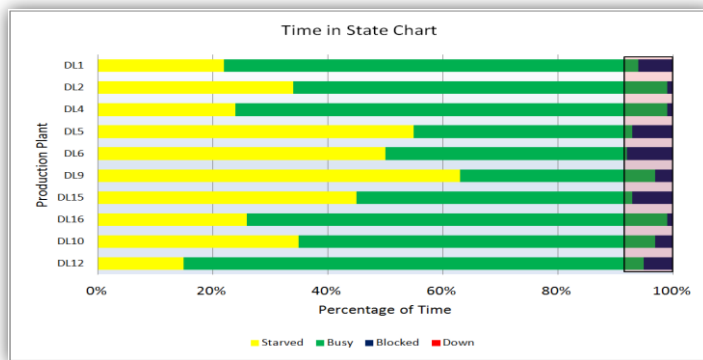
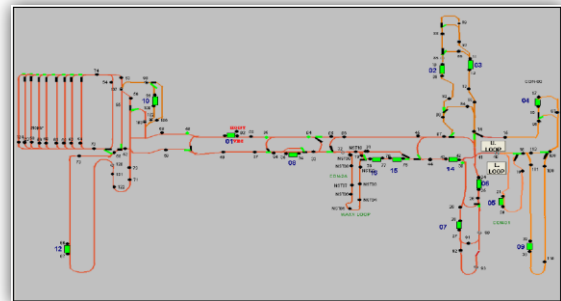
- Whether P&F conveyor is capable to meet required production volumes
- If not, actions required to meet the target
- Finished BIW Buffer requirements

PMI's Approach

- Data analysis, 2D model building, verification & validation
- Bottleneck Identification
- "What If" experimentation to achieve set target
 - Impact of Change in no. of Hangers
 - Distribution of hangers on various junction points
 - Buffer analysis

Findings & Recommendations

- Facility was unable to meet target production volume
- Distribution of hangers at various junctions played key role
- Production volume also dependent on number of hangers
- Reduce the number of empty hangers to meet the target
- Distribution of empty hangers at various junction points
- Number of empty hangers to be parked in different places
- BIW Buffer size was estimated



*Data shown here has been modified to protect client confidentiality