

Detailed 3D Modeling of Assembly Section



Key Points

- Pilot Project of 1500 sqm
- Awarded with 50,000 sqm Project



Client's Challenge

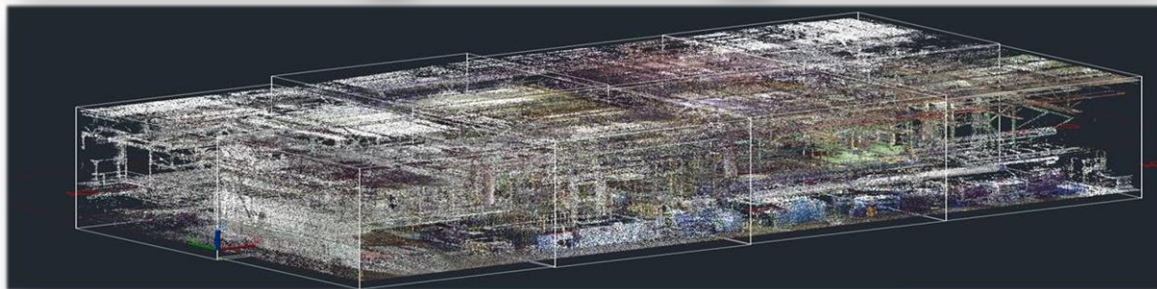
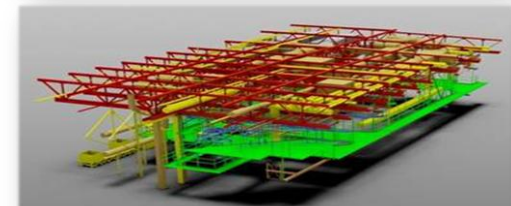
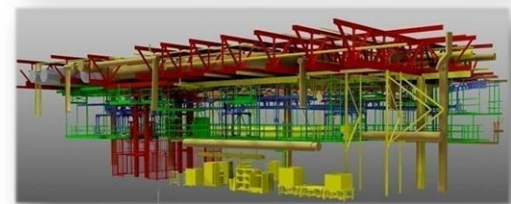
- No details available on - Columns, Truss, Piping, Roof Drains, HVAC, Conveyor Path, etc. of existing Assembly shop
- As-Built drawing to be generated to lay new P&F Conveyor
- Obtain the 3D Model and 2D drawings in millimetres

PMI's Approach

- Laser Scanning carried out for 1500 sqm area
- Divided Point cloud files to involve more people & meet deadline
- Developed parametric factory assests to generate quick Model

Submission

- Modelled all Client requirements within 140Hrs
- Physical Verification carried out by Client and found CAD drawings to be accurate



*Data shown here has been modified to protect client confidentiality