



# Production Modeling India

[www.pmicorp.in](http://www.pmicorp.in) | [www.pmcorp.com](http://www.pmcorp.com)





PMI (Production Modeling India) is an Operations Consulting Firm founded in 2006 as the Indian arm of PMC (Production Modeling Corporation).



Incorporated in **2006**, HQ @ Nagpur, India



Employee strength **130+**



**800+** projects successfully completed



**300+** Clients served



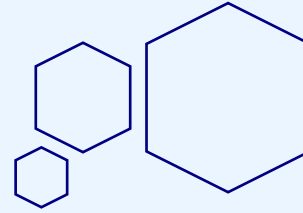
ISO Certified



Production Modeling Corporation (PMC) – parent organisation

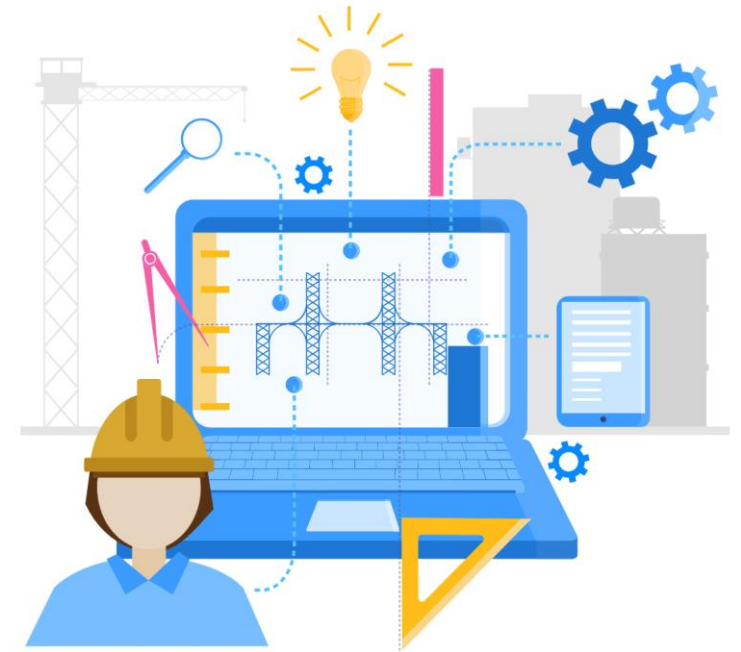


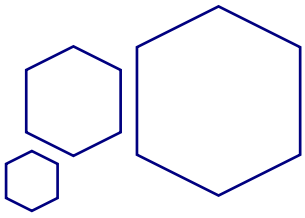
# Agenda



- Who are we?
- Our Journey
- Industry Challenges
- PMI :The Key to industry challenges
  - Industrial Engineering Services
  - Simulation Modeling Services
  - Laser Scanning & 3D modelling
  - HR Consulting Services
  - Steel Detailing Services
- Why PMI
- Our Clients and Testimonials

PMI





# Who are We? **PMT**

We deliver customized and comprehensive industrial engineering and operations consulting services, driving productivity to new heights.

## Services offered



Industrial Engineering Services



Simulation Modeling Services



Laser Scanning and 3D Modeling



Steel Detailing Services



HR Consulting Services

## Industries served



Manufacturing



Heavy Machinery



Steel industry



Automobile and tyres



Process industry



FMCG

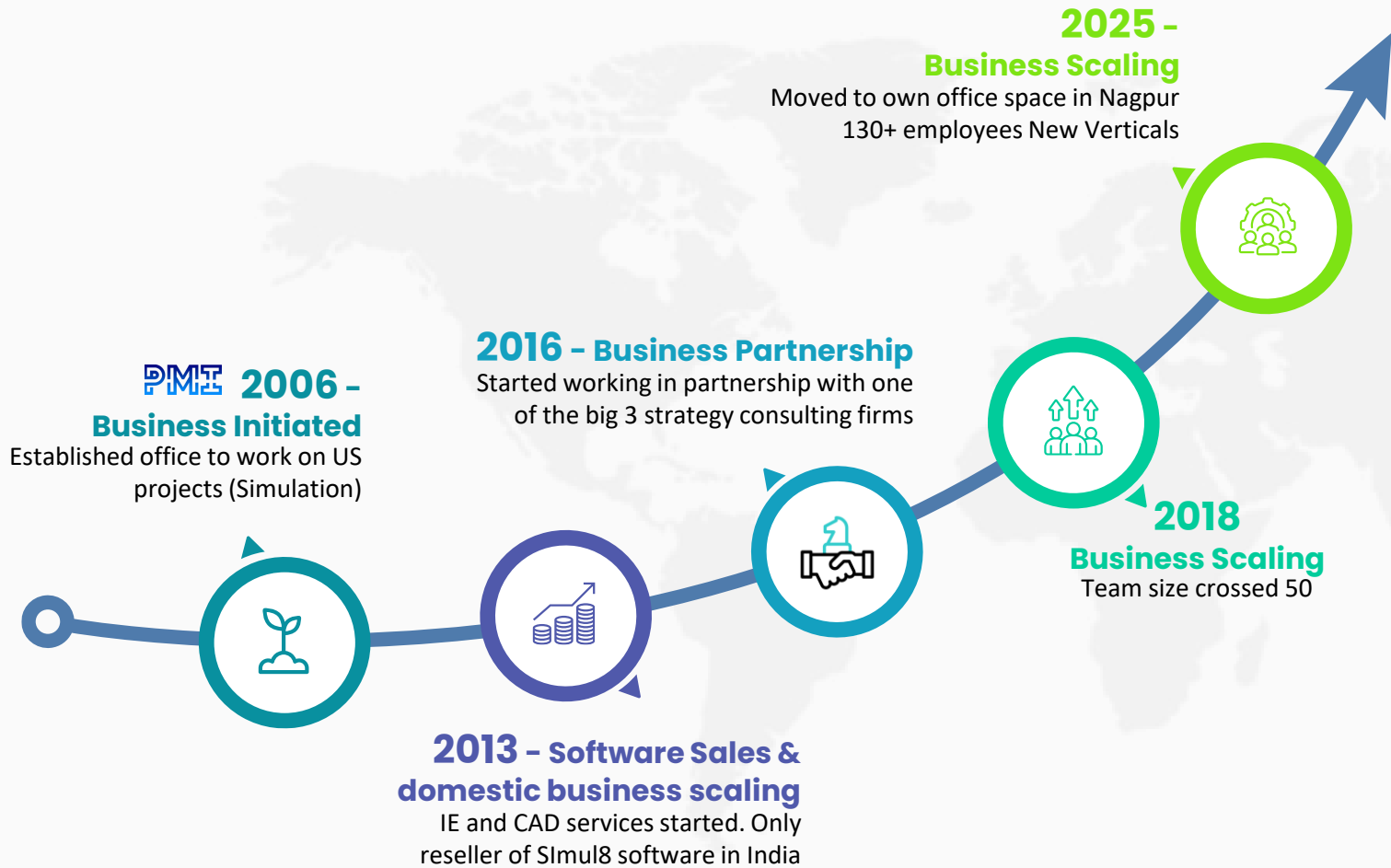


Pharmaceuticals



Service industry ..... and others

# Our Journey



## > Offerings



**Industrial Engineering**



**Discrete event simulation**



**Laser scanning & 3d modelling**



**Talent Practices**



**Steel Detailing services**

# Industry Challenges

- Operational Uncertainties
- Productivity improvements
- Complex manufacturing systems

- Talent transformation
- Leadership assistance
- Competency and skill mapping

- Accurate, up to date layouts
- 3D Visualizations
- Expansion assessment
- Capex

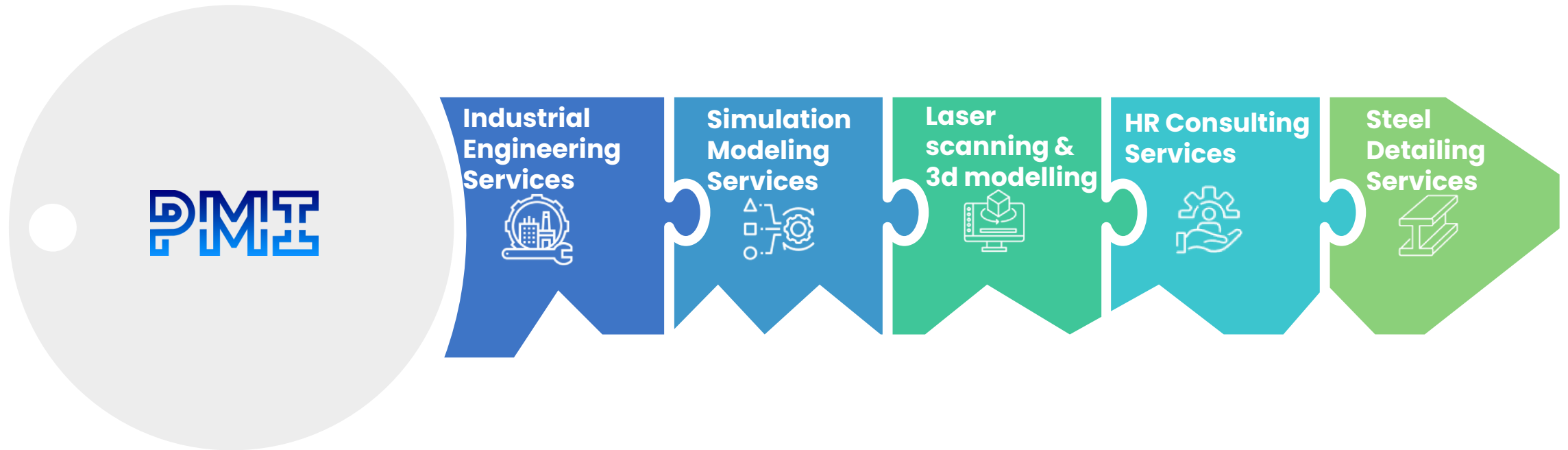
- Bottleneck identification
- Tight Deadlines
- Batch sizing
- Resource optimization



**PMI**  
is  
**YOUR KEY**  
to these challenges



# PMT: The Key



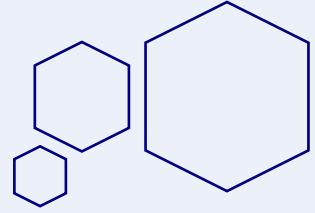




## Development Of Productivity Improvement Roadmap



# Industrial Engineering – Offerings

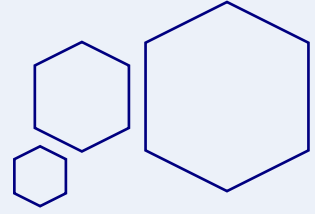


- **Work Standards Development**  
(PMTS / Time study/ Production Study)
  1. Direct Areas
  2. Indirect Areas
  
- **Resource Requirement Calculations** (Manpower & Machine)
  1. Line Balancing (Assembly Lines)
  2. Man-Machine Charts (Machine shop) / SWCT for manpower engagement assessment
  3. VA and NVA Analysis
  4. Loss Capturing (Production Study)
  5. Resource / Capacity Utilization Analysis
  
- **Layout Analysis** – Material flow, Lean Concept, Space utilization, Etc.
  
- **Training** : PMTS Techniques & Basic Industrial Engineering concepts

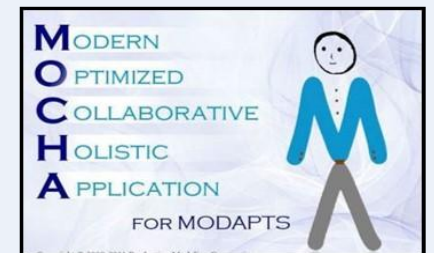




# Industrial Engineering – Capability

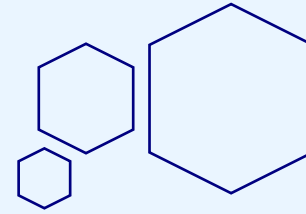


- **Versatility:** Across industries, 0.3 sec to 23 hours cycle time
- **Wide Experience:** 30+ years of industry experience
- **Return on investment (ROI):** ~3 months with minimum 20% productivity improvement
- **Stakeholder engagement:** robust experience of engaging with unions
- **Customized Dashboards**
  - Client Specific Dashboards
  - Summary of Recommendations

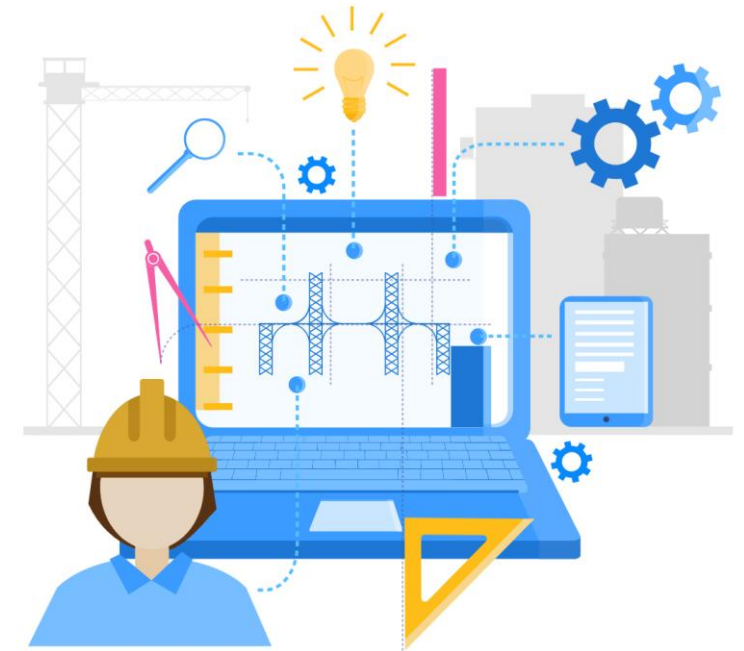


In-house Tool for PMTS  
Estimation

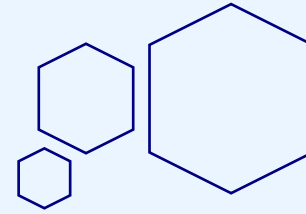
# Simulation Modeling – Offerings



- Throughput Validations
- Buffer Analysis, Space requirements
- Bottleneck Identifications
- Material Handling, Congestion Analysis
- Capex requirement validations
- Truck Turn Around time
- Dock utilizations Improvement
- Validations of Expansion plan



# Simulation Modeling – Capability



- **Unique and Proven Methodology**
  - 20+ years of experience
- **User friendly Model**
  - Interactive interface
- **Multi-Domain / Multi-Industry** experience
  - Complex manufacturing systems
  - Material Handling
  - Supply Chain
  - Multiple software
- **Strong Data Analytical Skills**



**Our Simulation  
Modeling  
Platform**



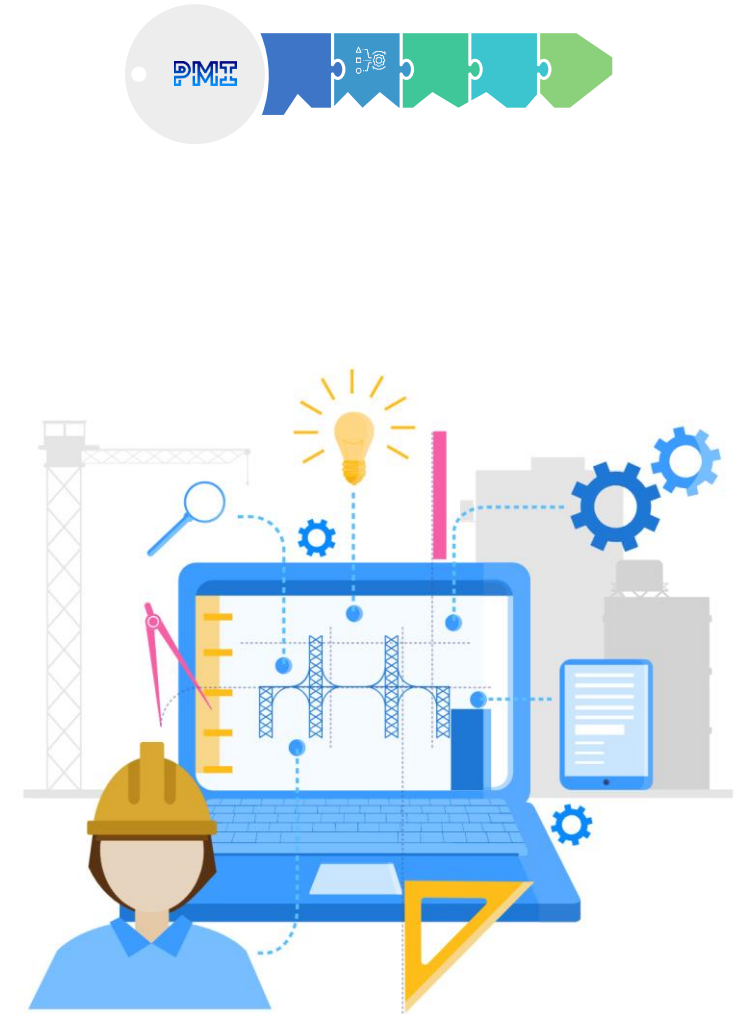
**Ease of Use  
Fast  
Modeling**

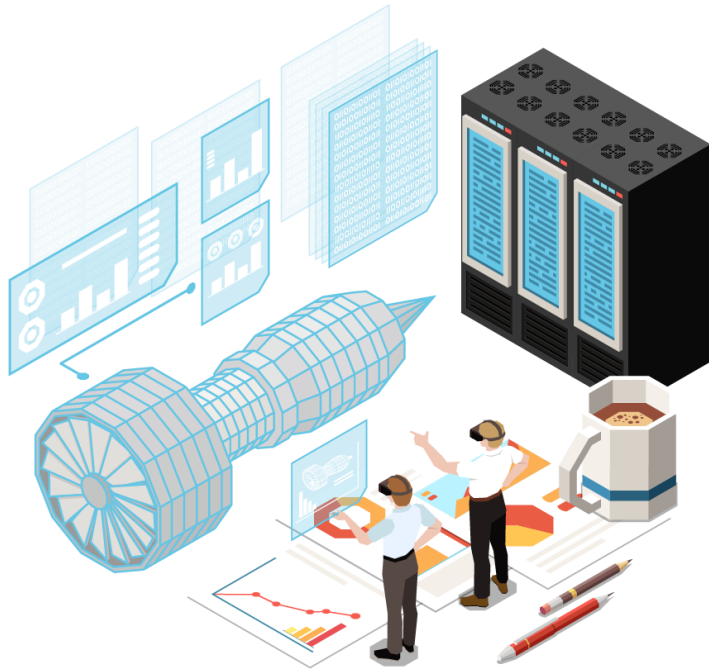


**Integrated with  
Siemens PLM**

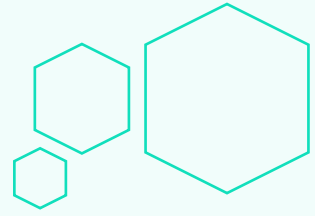


**Simulation  
Modelling  
software**

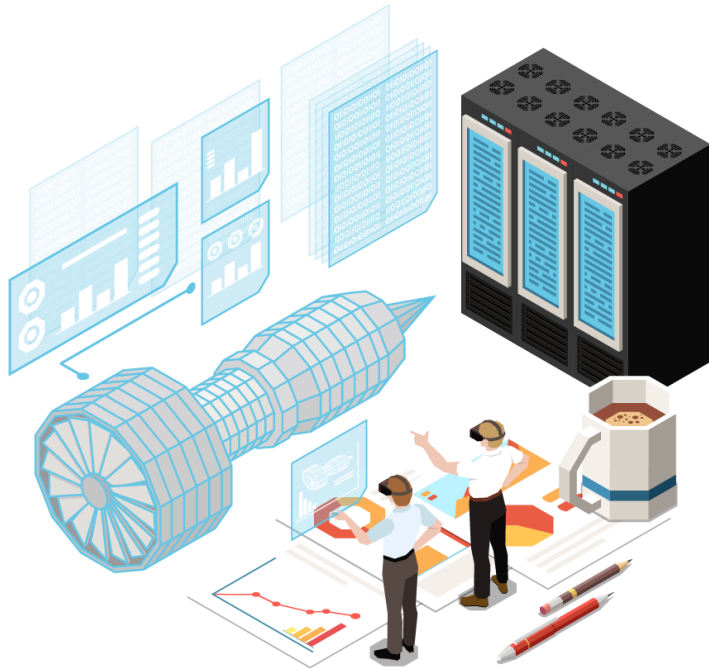




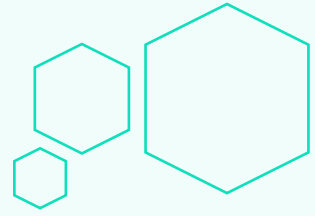
# Laser Scanning & 3D modeling – Offerings



- Scanning
- 3D Layout – As Built
- 2D and 3D layouts
- Plant Walk Through
- Validation of proposed expansion
- Web Share data



# Laser Scanning & 3D Modeling – Capability



- Total experience of more than 17 Lakh sq. ft. for laser scanning & 3D modeling
- Wide Spectrum of Industries served
- Classified, User friendly and Multipurpose 3D CAD Model
- Self-sufficient Team with technical bandwidth across disciplines to address TLS scanning and 3D modeling



AUTODESK® ARCHITECTURE,  
ENGINEERING & CONSTRUCTION  
COLLECTION



PRODUCT DESIGN &  
MANUFACTURING COLLECTION



AUTODESK® ARCHITECTURE,  
ENGINEERING & CONSTRUCTION  
COLLECTION

# PMI's HR Consulting Services spans across various key offerings

1



## Talent Transformation Services

- Conduct diagnostics studies for current talent practices
- Spearhead Talent Transformation initiatives to strengthen business growth
- Leadership assessments

2



## HR Analytics

- Talent acquisition, engagement and Development Analytics
- Workforce Planning and Talent Sourcing Analytics
- Performance, Potential and Rewards
- Collaboration Analytics – Building Effective Teams

3



## HR Technology Service

- Evaluate automation possibilities for HR function
- Support and implement fit for purpose HR automation solution
- Drive automation for 100+ HR processes
- Automate to Innovate

4



## POSH – Prevention of sexual harassment

- Expert guidance in developing and implementing comprehensive policies
- Training programs to ensure a safe, compliant, and respectful workplace
- Tailored solutions to create a culture of accountability and inclusivity

### Our Partners



Skills management software



A simple, one-stop-all HR software



AI-Powered OKR Platform



Unified Multistakeholder Experience Platform



# PMI's HR Consulting Services spans across various key offerings

5



## Role-Based Cultural Workshops

- Understanding different cultures,
- Leadership development
- Culture sensitization workshops
- Use of theatrical techniques for creative problem solving
- Leverage Coaching, Mentoring and NLP

6



## TaaS – Talent-as-a Service + Virtual CHRO

- Consider our consulting team as extension of your team
- Talent Sourcing at mid-to-senior levels
- Talent Acquisition Services
- Training and Development Services in collaboration with Training Partners

7



## Corporate Communication

- Clear and consistent messaging strategies
- Improve employee engagement and alignment
- Compelling external communications

8



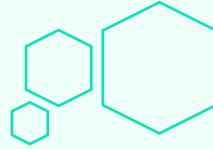
## HR Operations Services

- Look after pre and post onboarding processes
- Create policy framework
- Manage HR operations compliance like PF, ESIC, Payroll etc
- Shared Services organization productivity improvement and impact analysis

PMI HR Consulting Services will collaborate with you for co-creating solutions in all these areas



# Steel Detailing Services



- All-inclusive solution for Structural and Miscellaneous Steel Detailing needs.
- Quality and Timely Submissions
- Leveraging SDS/2 and Tekla Software for precise steel structure Detailing.
- Technical Expertise in AISC, NISD, AWS and OSHA Standards.
- Four Stage Quality Checking Process.
- Adequate bandwidth capacity for project turnaround.
- Standardized procedures to minimize redundant and Last minute RFI's.



# Summary of PMI offerings

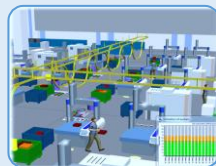
## Industrial Engineering Services

- Work measurement
- Line Balancing
- Layouts
- Productivity Improvements



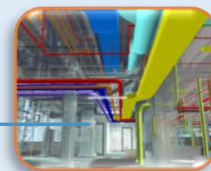
## Simulation Modeling Services

- Throughput validation
- Buffer Analysis, Space req.
- Bottleneck identification
- MHE & congestion analysis
- Truck TAT analysis
- Dock utilization
- Validation of expansion project



## Laser Scanning and 3D Modeling

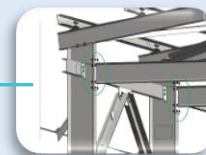
- Scanning
- 3D Layout – As Built
- 2D and 3D layouts
- Plant Walk Through
- Validation of proposed expansion
- Web Share data



## Steel Detailing Services

Applications:

- Modular Structures, Industrial Structures, Commercial Buildings, Towers, Institutional Buildings, Residential Buildings, Foundation Structures



## HR Consulting

- Talent transformation
- Talent as-a-service
- Virtual CHRO
- HR Analytics
- Corporate communication



**PMI SERVICES**

# Why PMT ?

90% of our customers return to us for a second project !



## Experience

800+ successful projects delivered  
200+ man-years of global expertise



## Competence

Anything from technology to unions' conflicts.  
Support for Industry 4.0 and digital manufacturing



## Solution provider

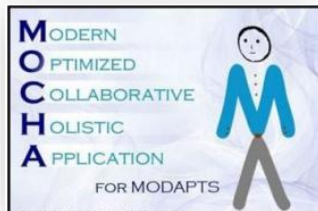
We are always part of the solution with 100+ training programs



## Simplicity

Ability to simply handle complicated IE projects and resolve complex situations

## Software



In-house Tool for PMTS Estimation

**SIMUL8**

Ease of Use  
Fast Modeling



Congestion Analysis  
Material Flow Analysis



Integrated with  
Siemens PLM



Autodesk software and tools

# Our Clients and Client Testimonials



“ PMI’s approach and expertise in Simulation Modeling Analysis proved extremely valuable for our new Body shop project

- COMAU Team, India

“ PMI’s expertise in Industrial Engineering proved beneficial during Work Content Estimation to validate resource utilization

- Group head YAMAHA India

“ PMI’s in-depth knowledge enabled us to lay the foundation of Industrial Engineering which triggered productivity improvement

- Head technology, Carraro India

We work with one of the top three consulting companies such as McKinsey, BCG etc. to service their clients.

# Contact us

- Address :  
Plot No. 1&2, Khasra No.57/4,  
Isasani, Hingna Taluka,  
Nagpur – 441110
- Phone No :  
(+91) 844-605-6583 / 3180
- Email :  
[asia@pmcorp.com](mailto:asia@pmcorp.com)
- Website:  
[www.pmicorp.in](http://www.pmicorp.in) | [www.pmcorp.com](http://www.pmcorp.com)

